



Item No. _____

Project _____

Quantity _____

Electric, Full-Size, Stacked/Std Depth Convection Ovens

Model: ECOF-[AP/S/PT]2



Model ECOF-AP2 shown

PAN CAPACITY GUIDE [Per Oven/Total]

| Pan Type | Rack Positions | Optimum |
|----------------------|----------------|---------|
| 18" X 26" Full-Sheet | 10 or 11/oven* | 5/10 |
| 12" X 20" Hotel** | - | 10/20 |

* AP & SII = 10; PT = 11

** 2-1/2" deep pans

SHORT/BID SPECIFICATION

Convection Oven shall be a **LANG Manufacturing Model ECOF-___** with [AP=Accu-Plus, SII=Selectronic II, PT=Platinum]2 Control Packages, two factory stacked 11.66-kW electric heated 5-pan full-size units, each with: simultaneous-opening heavy duty doors; unitized stainless steel exterior and porcelainized steel cooking compartment; powerful rear mounted blower with two speed motor and pulse control; compartment inspection lights and five pan racks per compartment standard; plus a "life-time" warranty on doors. Includes all the features listed and options/accessories checked:

STANDARD PRODUCT WARRANTY

- Three year, parts & labor
- *LIFETIME* warranty on doors

CONSTRUCTION FEATURES

- Heavy duty 430 Series stainless steel exterior, with attractive No. 4 finish
- Fully enclosed oven back
- Cooking compartments are porcelainized steel
- 2" insulation on six sides of cooking compartments
- Heavy duty, simultaneously-opening compartment doors, with large double pane tempered glass windows
- Powerful blower centered in back of each compartment
- Compartment inspection lighting standard
- Chrome steel 10 or 11 position rack slides with five chrome plated wire racks provided for each oven
- Choice of [Specify one]:
 - 6" adjustable legs [standard] or
 - 6" heavy duty casters

PERFORMANCE FEATURES

- 150 to 450°F operating temperature range
- Solid state temperature control accurate to ± 4°F
- Two speed fans with fan pulse capability
- Door interlock switch cuts power to fan
- Choice of four different control packages [See below]

CONTROL PACKAGE [Specify One]

- Accu-Plus Controls [-AP]**
 - Simple knob-set time and temperature controls
 - 1-hour timer with non-stop buzzer
 - Pulse-fan and HIGH-LOW speed fan switches
 - Power-ON and inspection light switches
- Selectronic II Controls [-SII]**
 - Solid state temperature control with digital time/temperature display
 - Heat loss compensation
 - 10-hour countdown timer, with non-stop buzzer
 - Automatic Cook-n-Hold switch
 - Pulse-fan and HIGH-LOW speed fan switches
 - Power-ON and inspection light switches
- Platinum Controls [-PT]**
 - Solid state, icon driven, one-touch programmable controls
 - Up to 99 product programs, with multiple baking tiers
 - Time, temperature, heat loss and adjustable shelf compensation
 - Cook-n-Hold programming
 - 2-speed fan & variable-rate pulse-fan control
 - PC link programming
 - Modem [Option]
 - Power-ON and inspection light touch pads



Sheet No. LSP-C6 (rev. 01/12)

Electric, Full-Size, Stacked/Std Depth Convection Oven

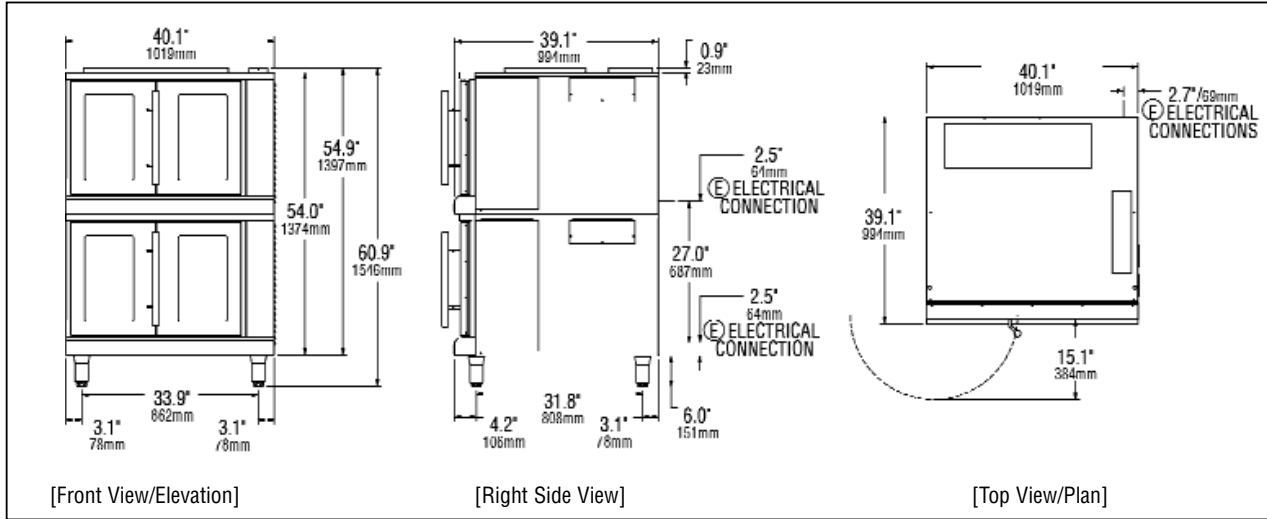
Model: ECOF-[AP/S/PT]2

INSTALLATION REQUIREMENTS

- (E) Two site changeable dual voltage: 208V/240V, 1- or 3-Phase; or optional 480V, 3-phase electrical connections
- Installation under approved vent hood may be required. Contact local codes. [Power connection from rear. See below]

OPTIONS & ACCESSORIES

- 480 Volt, 3-phase models [no charge]
- 6" heavy duty casters no-cost option
- Factory installed modems [Platinum/-PT models only]
- Factory recipe programming [Platinum/-PT models only]
- Steam injection option [Platinum/-PT models only]
- 3" stainless steel spacer
- Solid stainless steel doors, in lieu of doors with windows
- Extra wire pan racks [5 provided as std. in each oven]



| Model | Height x Width x Depth (with standard legs) | Clearance from combustible surface | Weight | | Freight Class |
|--------|--|--|--------------------|--------------------|------------------|
| | | | Actual | Shipping | |
| ECOF-2 | 60.9" x 40.1" x 39.1" 1546mm x 1019mm x 994mm | Sides: 6" (153mm) Back: 6" (153mm) Floor: 6" (153mm) | 780 lbs. 355 kg | 860 lbs. 391 kg | 70 |

| Model | (E) Total Electrical Requirements [Via two connections] | | | |
|--------|---|----------|-------|-----------|
| | Voltage | Total kW | Phase | Amps/Line |
| ECOF-2 | 208V/60Hz | 23.3 | 1 | 112.1 |
| | 240V/60Hz | 23.3 | 1 | 97.2 |
| | 480V/60Hz | 23.3 | 1 | 48.6 |
| | 208V/60Hz | 23.3 | 3 | 74.2 |
| | 240V/60Hz | 23.3 | 3 | 57.7 |
| | 480V/60Hz | 23.3 | 3 | 32.2 |

CAD SYMBOLS & PRICING



Due to continuous improvements, specifications subject to change without notice.



Sheet No. LSP-C6 (rev. 01/12)

LANG MANUFACTURING • 10 SUNNEN DR. ST. LOUIS, MO 63143
Phone: 314-678-6315 • FAX: 314-781-3636 • www.langworld.com